



WORM LOVERS



We are Wormlovers

Sectors

- Council
- Education
- Commercial
- Retail
- Community

Products

- Worm farms
- Compost products
- Edible gardens
- Consultation
- Service
- Training



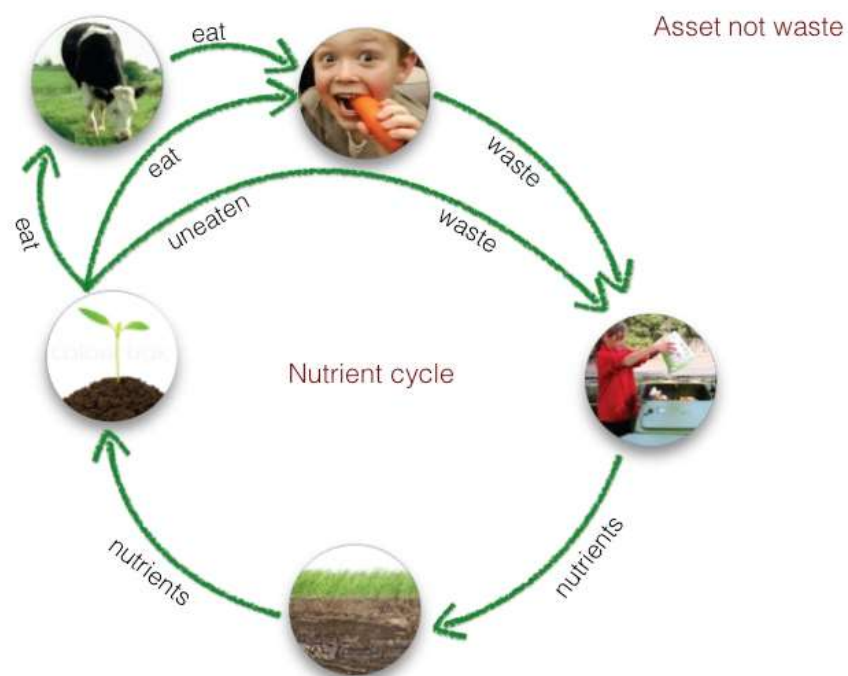
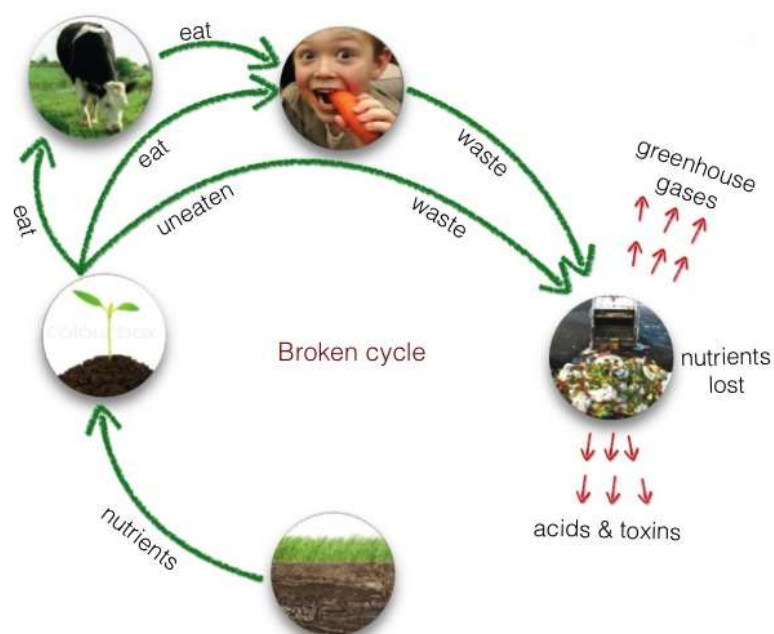
The Wormlovers Vision

- Transform cities into localised food waste processing and urban food production
- Engage and educate
- Create value from waste, up-cycling nutrients
- Worms = healthy soils, plants, communities
- Anyone who eats food is a potential worm farmer



Wormlovers – Sustainable urban nutrient cycling

Turning food waste into food



Hungry Bin worm farm





Hungry Bin worm farm





Selected Projects

City Gardens Residential complex

City of Melbourne support; 14 bins



City of Stonnington

M.U.D. composting project 2016 - ongoing



City of Stonnington

M.U.D. composting project 2016 - ongoing



- Model developed by Wormlovers in collaboration with Council
- 3 sites in 1st year (pilot)
- 8 sites in 2nd year
- Now ongoing
- Wormlovers communicate with OC's, deliver systems, resident engagement and training
- Ongoing support as required



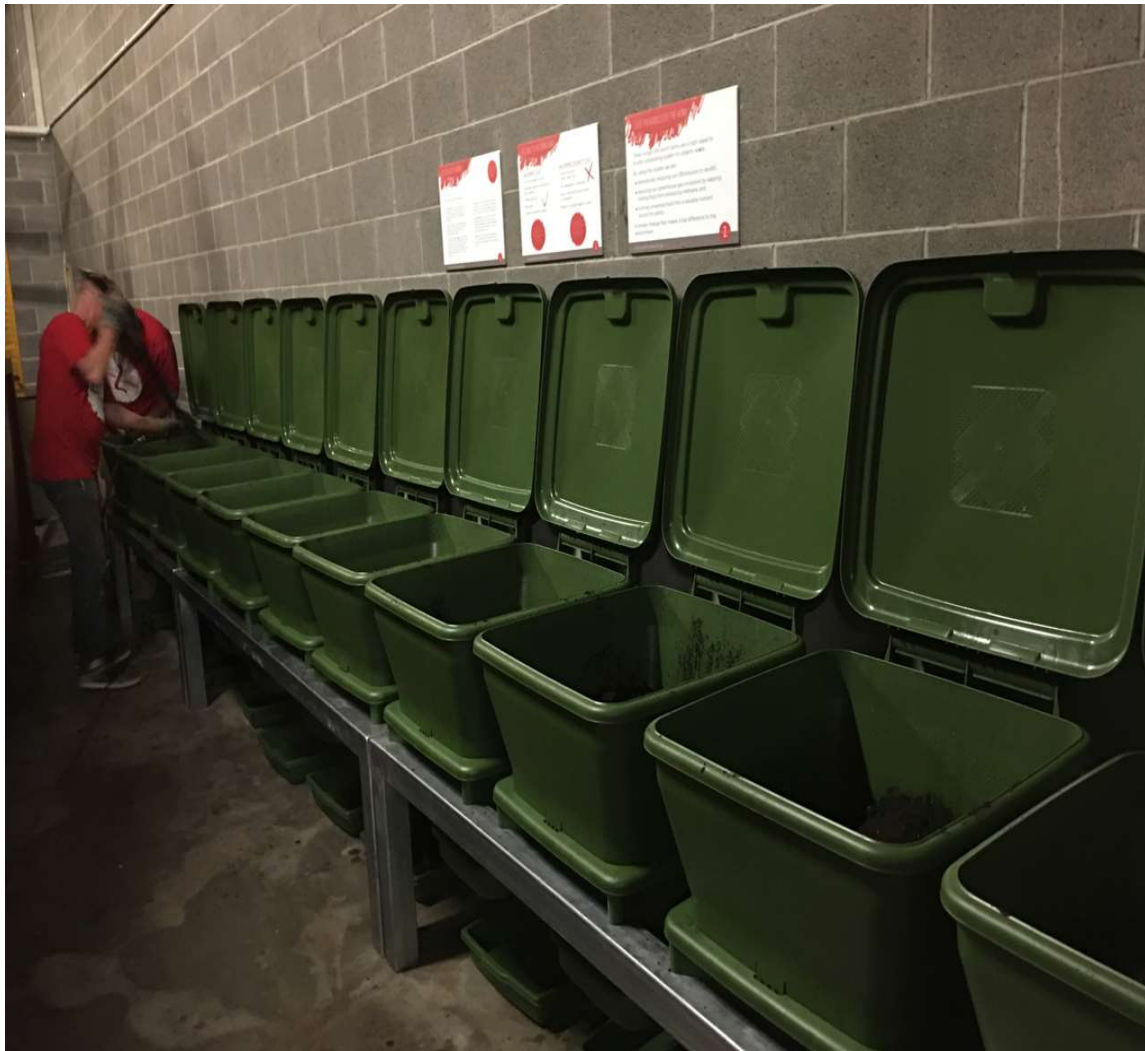
Higher Ground Café

20 Hungry Bins; largest commercial worm farm in Melbourne



Higher Ground Café

20 Hungry Bins; largest commercial worm farm in Melbourne



- 20 Hungry Bins
- Up to 10 tonnes p.a.
- Market garden offsite using outputs
- Wicking beds being installed



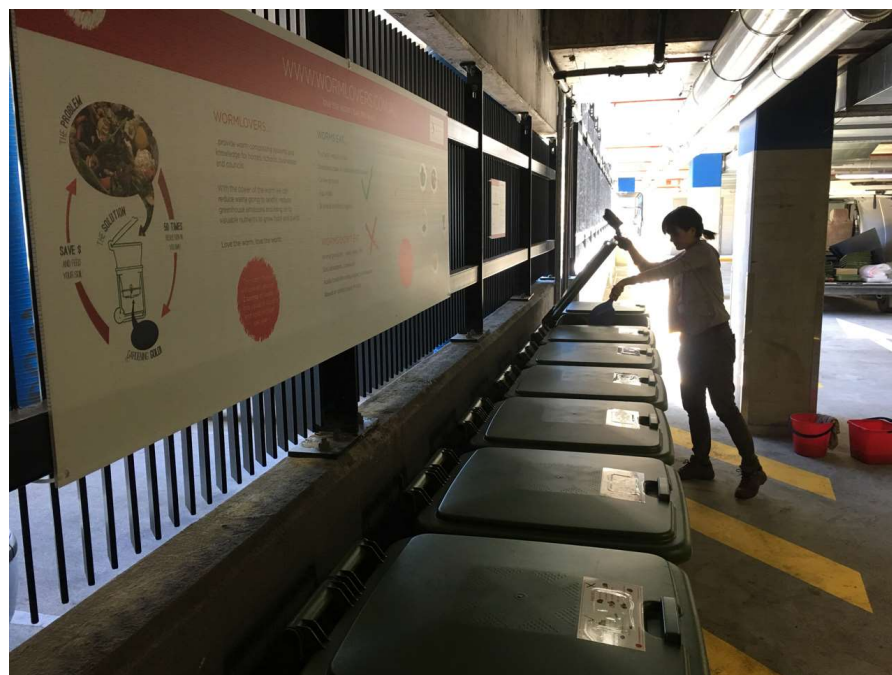
Curtin House (CBD) rooftop garden & worm farms

Established 2012





City of Banyule Greensborough centre – 12 bins; 300 staff



City of Melbourne Council House 1 & 2

13 bins with monthly service





City of Melbourne Council House 2

Edible rooftop garden coupled with worm farms



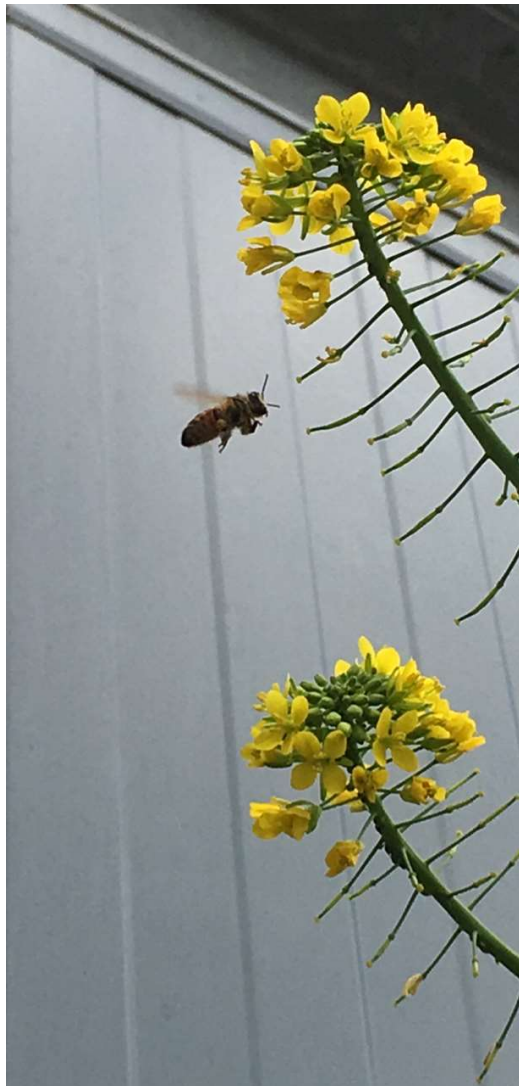
City of Melbourne Council House 2

Edible rooftop garden coupled with worm farms



City of Melbourne Council House 2

Monthly workshops at edible rooftop garden



City of Melbourne Council House 2

Harvest lunch

